

the autism show

in association with



The National Event for Autism

28-29 June 2019 | EventCity, Manchester

The Ultimate Guide for Parents, Carers and Professionals



LEARN NEW STRATEGIES
& APPROACHES



HEAR THE UK'S LEADING
AUTISM PROFESSIONALS



INTERACT WITH
INNOVATIVE FEATURES



ACCESS ONE TO ONE
SPECIALIST ADVICE



LISTEN TO ADULTS ON
THE AUTISM SPECTRUM



DISCOVER 100s OF
PRODUCTS & SERVICES

Follow us on



Book now and save 20%

www.autismshow.co.uk

Help guide other parents, carers and professionals by inviting them to the event



The Autism Matters Theatre



In partnership with



Hear the UK's leading autism professionals, researchers and campaigners discussing the latest news and views.

Fri 28 June	Title	Speaker
10.30 - 11.05	Updates and initiatives: a round-up of current issues in autism research, policy and practice	Carol Povey, Director of the Centre for Autism at National Autistic Society
11.15 - 11.55	Reducing anxiety and improving mental health in autistic children and young adults	Dr Sue Granger, Autism Practice Facilitator (Schools) at National Autistic Society
12.05 - 12.45	Effective support for autistic children in mainstream schools	Sharonne Horlock, Strategic Leader at SEND
12.55 - 13.35	Social and communication difficulties and interventions in a classroom setting	Simone Leese and Emma-Kay Belcher, Specialist ASC Teachers at the Salford Learning Support Service
13.45 - 14.25	Supporting pupils with sensory difficulties	Dr Dido Green, Specialist Research Occupational Therapist at Royal Free Hospital NHS Foundation Trust
14.35 - 15.15	Supporting autistic pupils with ADHD	Dr Khalid Karim, Clinical Teaching Fellow at University of Leicester and Honorary Consultant in Child and Adolescent Mental Health at Leicestershire Partnership Trust
15.25 - 16.00	Restoring positivity to the stressed classroom – an analytical approach to addressing challenging behaviours	Sue Stephens, Trainer and Consultant
16.10 - 16.50	Transdisciplinary working within a specialist school	Danielle Sloan, Specialist Speech and Language Therapist at NAS Daldorh House School

Sat 29 June	Title	Speaker
10.30 - 11.05	Updates and initiatives: a round-up of current issues in autism research, policy and practice	Carol Povey, Director of the Centre for Autism at National Autistic Society
11.15 - 11.50	How I turned my autism into a career	Connor Ward, Autism Vlogger and Consultant
12.00 - 12.40	Supporting your autistic child through school	Jessie Hewitson, Author, and Journalist at The Times
12.50 - 13.30	Small changes - making adjustments to deal with challenging behaviours	Sue Stephens, Trainer and Consultant
13.40 - 14.20	Mental health strategies - positive effects of stimming, embracing special interests and removing the mask	Georgia Harper and Sam Ahern, Presenters of Channel 4's Are You Autistic?
14.30 - 15.05	Alec and Bobby are in the building: creating a positive perspective to influence your parenting style	Debby Elley, Author and Co-Editor of AuKids magazine
15.15 - 15.50	Understanding your child's behaviour and reducing stress at home	Dr Jo Bromley, Service Lead and Consultant Clinical Psychologist for the Clinical Service for Children with Disabilities, CAMHS at Central Manchester University Hospitals NHS Foundation Trust

Correct at time of press. To view the latest programme visit www.autismshow.co.uk

Speakers include:



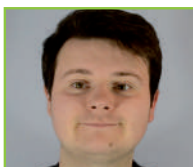
Georgia Harper & Sam Ahern
Presenters of Channel 4's Are You Autistic?



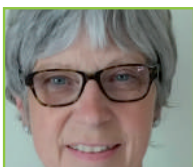
Carol Povey
Director of the Centre for Autism at National Autistic Society



Dr Dido Green
Specialist Research Occupational Therapist at Royal Free Hospital NHS Foundation Trust



Connor Ward
Autism Vlogger and Consultant



Sue Stephens
Trainer and Consultant

The Hub: Theatre 1



In partnership with

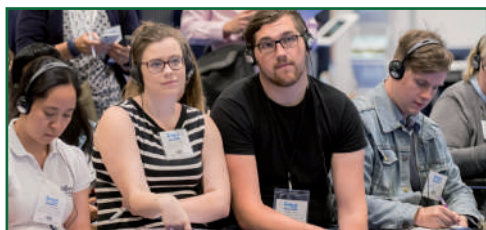
parc

Listen to the experiences of autistic adults to gain direct insights into your past, present and future.

Fri 28 June	Title	Speaker
10.25 – 10.55	The National Autistic Taskforce	Dr. Damian Milton
11.00 – 11.30	My life living with Asperger's	Alex Manners
11.35 – 12.05	It's okay to be me	Richie Smith
12.10 – 12.40	What does ASD look like to you?	Beth Edwards
12.45 – 13.15	"There's nobody like me": an autistic teacher's insights into school life for female autistic students	Amanda Hind
13.20 – 13.50	How to really help autistic people in your professional and personal life	Adam Sutcliffe-Brown
13.55 – 14.25	Pros and cons of autistic parenthood	Shona Davison
14.30 – 15.00	AspergerWorld: my autism's hidden hardships and gifts	Joely Williams (Colmer)
15.05 – 15.35	Autism and employment	Connor O'Halloran
15.40 – 16.10	How to conquer your goals	Kieran McLoughlin
16.15 – 16.45	The paradox veil	Noushka Galley

Sat 29 June	Title	Speaker
10.15 – 10.45	How to be autistic and happy	Andy Smith
10.50 – 11.20	The mental health survival guide: autistic edition	Billie Jo Gibson
11.25 – 11.55	Autistic inertia	Leneh Buckle
12.00 – 12.30	Senses and sensibility: findings from our Grand Sensory Survey	Sarah McCulloch and Alex Mason
12.35 – 13.05	Janice: a progression of realities	Callum Brazzo
13.10 – 13.40	I can't access this	Sara Jane Harvey
13.45 – 14.15	Talent Autism, an extraordinary way to see autism and fall in love with it	Asia Dimitrova
14.20 – 14.50	Being awesomely autistic	Daniel Jones
14.55 – 15.25	An autistic actor/presenter in a neurodiverse world - and how I got here	Sam Downie
15.30 – 16.00	Asperger's saved my life	William Green

Correct at time of press. To view the latest programme visit www.autismshow.co.uk



Book tickets today at www.autismshow.co.uk

The Hub: Theatre 2



Learn new strategies and approaches for the home and classroom.

Fri 28 June	Title	Speaker
10.20 – 10.40	Untangling life with every step: an app designed with autism-friendly features	Jane Stroud, CEO, Acognia
10.45 – 11.05	Widgit Online - making resources for the classroom	Sue White, Education Manager at Widgit Software
11.10 – 11.30	Doing with, not for; enabling autistic people to succeed	Emma Houldcroft, Specialist Outreach Consultant at Seashell Trust
11.35 – 11.55	Early identification of additional needs	Sharon Davies, SEND Early Years Teacher, and Kate Gillespie, SEND Early Years Practitioner at SENDTAC in partnership with TTS
12.00 – 12.20	Supporting learners struggling to make age appropriate progress using Dynamo Maths. A transformative approach!	Karima Esmail, Curriculum Director and Independent Consultant at Jelly James Publishing
12.25 – 12.45	The new AET Progression Framework	Sarah Broadhurst, Director at Autism Education Trust, and Suzanne Farrell, Education Consultant at Autism Associates
12.50 – 13.10	Improving communication and engagement through an app	James Dickson, CEO of Piota Apps
13.15 – 13.35	Assistive technology to support autism: a parents perspective	Lydia Little, Parent & Regional Sales Manager for Abilia UK
13.40 – 14.00	Apple crumble: a therapeutic group for children with complex needs. Collaborative working across therapy and education	Jennifer Heath, Occupational Therapist and Lead Organisational Practitioner for Health and Therapy, and Emma Brassington Owens, Lead Speech and Language Therapist at Underley Garden School
14.05 – 14.25	Supporting emotional regulation with children and adolescents	Natalie Mills, Occupational Therapist and Kate Ratcliffe, Speech and Language Therapist, at Alderwasley Hall School
14.30 – 14.50	Challenging behaviours, sensory processing and sleep disorders; mutual improvement with Safespaces	Sharon Baillie, Product Advisor for Safespaces
14.55 – 15.15	Virtual reality within special education	Glen Harrington, Head of Regional Sales at Inclusive Technology
15.20 – 15.40	Self-injurious behaviour - reasons and solutions	Kate Strutt, Director and Clinical Psychologist at Redstone PBS
15.45 – 16.05	Using filmmaking as a tool for engaging with SEN learners	Nuvvy Sibia, Buddy Up Project Coordinator at Warrington Youth Club
16.10 – 16.30	Practical Skills Therapeutic Education	Caroline Bell, Principal at Brantwood Specialist School, part of Ruskin Mill Trust
16.35 – 16.55	Positive parent, positive professional: getting the best out of health and education meetings	Debby Elley, Author and Co-Editor of AuKids magazine

Correct at time of press. To view the latest programme visit www.autismshow.co.uk

Book tickets today at www.autismshow.co.uk

The Hub: Theatre 2 *continued*

Learn new strategies and approaches for the home and classroom.



Sat 29 June	Title	Speaker
10.20 – 10.40	Employability, PHSE and transition support to ensure a bright future	Angie Parratt, Employability and Work Based Learning Coordinator, and Jo Hall, Student Support Coordinator at David Lewis
10.45 – 11.05	Everything you wanted to know about SENDIST but were too afraid to ask	Iain Sim, Carpe Diem
11.10 – 11.30	Emotional well-being in vulnerable pupils with special educational needs (SEN)	Ann Bradbury, Headteacher, and Kate Adams, Independent School Nurse at St John's Catholic School for the Deaf
11.35 – 11.55	Positive Behaviour Support (PBS) and using live data to enhance quality of life	Anna Selby-Wells, Marketing Manager at Home From Home Care
12.00 – 12.20	Navigating the SEN Maze – your legal entitlement answered	Nicole Lee, Solicitor at SEN Legal
12.25 – 12.45	Practical ways to tackle sensory challenges	Steven Michaëlis, CEO of SAS Centre
12.50 – 13.10	Implementing preventative support to ensure a well-managed transition to adulthood	Rachel Babbidge, Transition Support Service at National Autistic Society
13.15 – 13.35	School inclusion and reintegration	Rachelle Russell, Director of Education at MacIntyre
13.40 – 14.00	Preventing and managing distressed behaviour at school	Carla Manini Rowden, Education Rights Manager at National Autistic Society
14.05 – 14.25	Estate planning for parents of children with autism	Paul Dodsworth, Managing Director at Estate Planning Solutions
14.30 – 14.50	Autism and fostering	Afshan Ahmad, Director at Rainbow Fostering Services
14.55 – 15.15	Autism and restricted eating	Emma Griffiths, Autism Consultant at North West Autism and SEND Consultancy
15.20 – 15.40	Employability, PHSE and transition support to ensure a bright future	Angie Parratt, Employability and Work Based Learning Coordinator, and Jo Hall, Student Support Coordinator at David Lewis

Correct at time of press. To view the latest programme visit www.autismshow.co.uk

■ **Access specialist clinicians, therapists and advisors**, in the One to One Clinics. Subjects covered include managing distressed behaviour in the home, preventing and challenging school exclusions, communicating and managing strong emotions: anxiety, sadness and over-excitement, ASC and sleep difficulties, and sensory processing difficulties

■ **Explore The Sensory Room** and enjoy an immersive sensory experience amongst the latest developments in sensory design and technology

■ **Join the Jumping Clay Workshops** and see how this jasmine scented, mess free, and bouncy clay can benefit those on the autism spectrum. Its unique texture is brilliant for developing fine and gross motor skills, hand to eye and hand to hand coordination, and its amazing colour mixing ability provides motivation and reward



Book tickets today at www.autismshow.co.uk

Exhibitors include:

Abilia	Explore Your Senses	PARC	SEN Magazine
Acorn Care and Education	Home From Home Care	Piota	Smartbox Assistive Technology
ActiVise Software	Inclusive Technology	Priory Group (Oliver House School)	SpaceKraft
Alderwalsey Hall School & Sixth Form Centre	Into Film	Rainbow Fostering Services	St John's Catholic School for the Deaf
Autism Education Trust	Jumping Clay	Redstone PBS	The Cambian Group
Autism Eye	Kisimul School	Ruskin Mill Trust	Tobii Dynavox
B Squared	MacIntyre	Safespaces	Together Trust
Carpe Diem	Manchester Occupational Therapy Services	SAS Centre – Sensory Activation Solutions	Tough Furniture
CSCD	Manchester Speech and Language	Seashell Trust	TTS Group
David Lewis	NAS Enterprise Opportunities	SEN Books	Vision for Education
Estate Planning Solutions	National Autistic Society	SEN Legal	West Kirby Residential School
			Widgit

When and Where

Opening times

Friday 28 June 10.00am - 5.00pm

Saturday 29 June 10.00am - 4.00pm

How to get there

Reaching EventCity is straightforward, whichever mode of transport you choose. The Autism Show takes place in hall 1 which is the first hall on your left when you enter the venue from the car park.

By car EventCity is conveniently located close to junctions 9 and 10 on the M60, making it very accessible to car users. EventCity has over 3,000 free car-parking spaces on-site and there is additional free parking at the Trafford Centre. If you are planning to find EventCity using a sat nav, please enter the postcode M17 8AS to bring you to the correct visitor entrance (the address postcode is M41 7TB however this navigates to the trade entrance)

By train alight at one of the train stations below and continue your journey using the respective bus connections:
Manchester Piccadilly - Bus service X50 or 250 from Piccadilly

Gardens Bus Station descending at the EventCity bus stop.

Manchester Victoria - Bus service 100 (every 12 minutes) or Service 110 (every 20 minutes) descending at The Trafford Centre bus station.

Quiet Room

A Quiet Room is available for visitors. Please visit the Organiser's Office within the hall to gain access.

EVENTCITY, HALL 1, PHOENIX WAY, OFF BARTON DOCK ROAD, URMSTON, MANCHESTER M41 7TB



DAY TICKET

	ONLINE ADVANCE	ON THE DOOR
Adult (Non professional)	£16.00	£20.00
Concession (In receipt of DLA or PIP, unemployed or student)	£15.00	£19.00
Child (Children under 16 enter free of charge when accompanied by an adult)	N/A	N/A
Group Bookings (10 or more non professionals or mixed)	£14.00	N/A
Professional	£20.00	£25.00
Professional Group Booking (10 or more)	£17.00	N/A
Booking Fee	£1.50	N/A

Tickets are day specific but, if unused, can be exchanged for an alternative day at the onsite ticket office. Online advance tickets will be available until 10am on the Friday of the show. After this time, ticket prices will increase to the on the door rate

Book tickets today at www.autismshow.co.uk

All information and advice expressed at The Autism Show is provided by third parties and offered by the organisers in good faith. Park View Events (North) cannot be held responsible for any damage or loss caused by any inaccuracy of information therein.

The Autism Show is organised by Park View Events (North) Ltd T: 020 8882 0629 F: 020 8338 0452 W: www.autismshow.co.uk

Organised by

